



*Keenleyside Tenant Community Centre
22-394 Keenleyside St. R2L 3B3*

Ph.# 204-667-4086 fax-204-667-4099

E-mail keenleyside@familydynamics.ca

July /August 2015



*We gratefully acknowledge Manitoba Housing and Community Development,
Manitoba Family Services and The United Way
for their generous support of our programs.*

Summer Fun at Keenleyside

*We would like to give a big warm welcome to Danny and Farah!
They have fun wonderful activities planned for our Keenleyside kids
this summer. Swimming, soccer, arts and crafts just to name a few.
Times and sign up sheets will be posted in the Centre , come on in and meet
our Green Team and find out what they have planned for summer fun.
(Parents must sign up their Children in the Centre)*

Thank you Healthy Together Now!

*The Keenleyside Community and staff would like to THANK Healthy
Together Now for generously funding a beach trip this summer!
There will be 2 trips, Thursday July 30th and Tuesday August 18th to
Birds Hill Park. Transportation, food and drinks provided by the Centre, as
well as sunscreen, bug repellent and beach toys for the kids. Families need to
sign up and let us know how many will be coming . Parents will be
responsible for their children on the outing. Space is limited to 50 so sign up
early.*

free



Keenleyside News

Free Community Kitchen!!

*On July 8th, from 1:30-3:00
free pm. free*

*This will be taking place every
Wednesday, at the new East
Elmwood Community Centre!
(Just down the street from here
at the brand new facility)!*

*They are able to accommodate
6 people per week. There will be
a rotating schedule for this
Community Kitchen, so that
everyone gets a chance.*

*No fee, prepare your food there
and bring it home to cook!*

Free !!!



*A huge Bouquet of THANKS is
going out to the incredible youth
at*

*The Mennonite Brethren
Collegiate Institute. They have a
“Youth in Philanthropy” group
that does extremely important
work in all of our communities.
This year the Y.I.P. group came
to the complex and the centre to
do an “on site visit.”*

*We visited and talked about the
programming that happens here
and they decided to gift our
community with some funding!
This kind of help goes a long
way in assisting our agency in
providing the kind of supports
necessary for our tenant
community centre. These teens
work at fundraising all year
long, put in countless hours of
volunteer time and selflessly
give away the money they raise!*

Centre Information

Shopping Shuttle

Shopping shuttle will continue through the summer.

*Starting July with the change of hours it will be
Mondays 9:30-11:30,
Thursdays 9:30-11:30.*

Change of hours for the summer

*The Centre will be open
Mondays 9:00-12:00,
1:00-4:30
Tuesdays 9:00-12:00,
1:00-4:30*

Wednesday to Friday will remain the same.

*We will still be doing "Shopping Shuttle"
"Tenant Community Meetings"
"Adult Arts and Crafts"
"Flapjack Fridays"*



Some summertime programs are subject to availability of space in the centre. If the kids programs are being run in centre, those programs will take priority over the Adult programs.

RESOURCE CENTRE HOURS:

The Keenleyside Tenant Community Centre would like to remind everyone in the Community that all resources and programs are accessible to all families. The computers, fax, phone, clothing depot, and community programs are available during open hours.

These are the open hours:

Monday : 9:00-12:00, 1:00-4:30

Tuesday : 9:00-12:00, 1:00-4:30

Wednesday : 1:00-4:30

Thursday : 9:00-12:00, 1:00-4:30

Friday:9:00-1:00

**** some hours may change depending on event and activities****

Tenant Community Meetings

These meetings are held twice a month and are the opportunity for the community to voice their opinions on what type of programs you would like to see going on at your Centre.

Who can attend?

Any adult living in the Keenleyside Complex.

Why should I attend?

Your ideas are important, also all program ideas come from an expressed interest from your community. Remember, the world is run by those who show up!

When are these meetings?

2 times per month. Together we can make a difference! Check your newsletter calendar for dates and times. We do a prize draw at the meeting closest to the end of the month. If you attend both meetings your name goes in the draw twice!

Youth Summer Programming

There are many fun programs and exciting outings planned for the youth of Keenleyside. Children aged 6-15 will have the opportunity to sign up for great activities like swimming, cooking & baking, arts & crafts as well as soccer games at the University of Winnipeg.



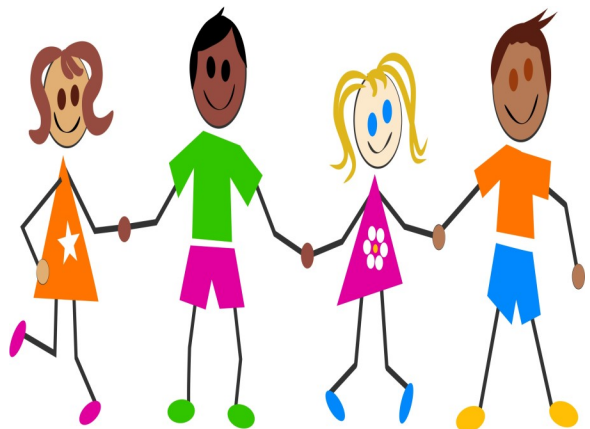
Programs will be organized on a weekly basis as scheduling is subject to change. We will be holding weekly signups every Friday for the following weeks activities and outings. Parents need to sign their children up.

Sign ups will occur on a first come first serve basis as there are limits to the amount of kids we can take. There will be a wait list available for each activity so that children get the opportunity to participate the following week.



Possible Outings:


- Bowling (Chateau Lanes)
- Children's Museum
(Tentative Date: July 16th)
- Wheelies
- Cinema City
- Central Park
(Tentative Date: July 31st)
- Hip Hop Workshop
- Manitoba Indigenous Cultural Education Centre



July 2015

Monday Open 9:00-12:00 1:00-4:30	Tuesday Open 9:00-12:00 1:00-4:30	Wednesday Open 1:00 - 4:30	Thursday Open 9:00-12:00 1:00-4:30	Friday Open 9:00 - 1:00
		1 Closed 	2 <i>Shopping Shuttle</i> 9:30-11:30 <i>Drop In</i> 9:00-12:00 1:00-4:30	3 <i>Drop In</i> 9:00-1:00 <i>Flap Jack</i> Friday <i>PJ's preferred</i>
6 <i>Shopping Shuttle</i> 9:30-11:30 <i>Drop In</i> 9:00-12:00 1:00-4:30	7 <i>Drop In</i> 1:00-4:30 <i>Tenant Community</i> <i>Meeting</i> 1:30-2:30	8 <i>Drop In</i> <i>Coffee Chat</i> 1:00-4:30 	9 <i>Shopping Shuttle</i> 9:30-11:30 <i>Drop In</i> 9:00-12:00 1:00-4:30	10 <i>Drop In</i> 9:00-1:00 <i>Flap Jack</i> Friday <i>PJ's preferred</i>
13 <i>Shopping Shuttle</i> 9:30-11:30 <i>Drop In</i> 9:00-12:00 1:00-4:30	14 <i>Drop In</i> 9:00-12:00 1:00-4:30 <i>Adult Crafts</i> 1:00-3:30	15 <i>Drop In</i> <i>Coffee Chat</i> 1:00-4:30 	16 <i>Shopping Shuttle</i> 9:30-11:30 <i>Drop In</i> 9:00-12:00 1:00-4:30	17 <i>Drop In</i> 9:00-1:00 <i>Flap Jack</i> Friday <i>PJ's preferred</i>
20 <i>Shopping Shuttle</i> 9:30-11:30 <i>Drop In</i> 9:00-12:00 1:00-4:30	21 <i>Drop In</i> 1:00-4:30 <i>Tenant Community</i> <i>Meeting</i> 1:30-2:30	22 <i>Drop In</i> <i>Coffee Chat</i> 1:00-4:30 	23 <i>Shopping Shuttle</i> 9:30-11:30 <i>Drop In</i> 9:00-12:00 1:00-4:30	24 <i>Drop In</i> 9:00-1:00 <i>Flap Jack</i> Friday <i>PJ's preferred</i>
27 <i>Shopping Shuttle</i> 9:30-11:30 <i>Drop In</i> 9:00-12:00 1:00-4:30	28 <i>Drop In</i> 9:00-12:00 1:00-4:30 <i>Adult Crafts</i> 1:00-3:30	29 <i>Volunteers for</i> <i>Beach trip prep</i> 1:30-3:30 	30 <i>Beach Trip!!</i> <i>Pick up at 9:30</i> 	31 <i>Drop In</i> 9:00-1:00 <i>Flap Jack</i> Friday <i>PJ's preferred</i>

August 2015

Monday Open 9:00-12:00 1:00-4:30	Tuesday Open 9:00-12:00 1:00-5:00	Wednesday Open 1:00 - 4:30	Thursday Open 9:00-12:00 1:00-4:30	Friday Open 9:00 - 1:00
3 Closed	4 <i>Drop In</i> 1:00-4:30 <i>Tenant Community Meeting</i> 1:30-2:30	5 <i>Drop In</i> <i>Coffee Chat</i> 1:00-4:30 	6 <i>Shopping Shuttle</i> 9:30-11:30 <i>Drop In</i> 9:00-12:00 1:00-4:30	7 <i>Drop In</i> 9:00-1:00 <i>Flap Jack</i> Friday <i>PJ's preferred</i>
10 <i>Shopping Shuttle</i> 9:30-11:30 <i>Drop In</i> 9:00-12:00 1:00-4:30	11 <i>Drop In</i> 9:00-12:00 1:00-4:30	12 <i>Drop In</i> <i>Coffee Chat</i> 1:00-4:30 	13 <i>Shopping Shuttle</i> 9:30-11:30 <i>Drop In</i> 9:00-12:00 1:00-4:30	14 <i>Drop In</i> 9:00-1:00 <i>Flap Jack</i> Friday <i>PJ's preferred</i>
17 Volunteers Beach Prep 	18 <i>Beach Trip!!</i> <i>Pick up at 9:30</i> 	19 <i>Drop In</i> <i>Coffee Chat</i> 1:00-4:30 	20 <i>Shopping Shuttle</i> 9:30-11:30 <i>Drop In</i> 9:00-12:00 1:00-4:30	21 <i>Drop In</i> 9:00-1:00 <i>Flap Jack</i> Friday <i>PJ's preferred</i>
24 <i>Shopping Shuttle</i> 9:30-11:30 <i>Drop In</i> 9:00-12:00 1:00-4:30	25 <i>Drop In</i> 1:00-4:30 <i>Tenant Community Meeting</i> 1:30-2:30	26 <i>Drop In</i> <i>Coffee Chat</i> 1:00-4:30 	27 <i>Shopping Shuttle</i> 9:30-11:30 <i>Drop In</i> 9:00-12:00 1:00-4:30	28 <i>Drop In</i> 9:00-1:00 <i>Flap Jack</i> Friday <i>PJ's preferred</i>
31 <i>Shopping Shuttle</i> 9:30-11:30 <i>Drop In</i> 9:00-12:00 1:00-4:30				